

# OPTICAL ISOLATOR FOR He-Ne LASERS & AMPLIFIERS



## DESCRIPTION

Based on a Faraday Rotator made of Terbium Gallium Garnet Single Crystal, this unit is specifically engineered, aligned, and optimized for superior performance at 632.8nm. Angled input faces insure high isolation when used at normal incidence.

The compact design provides convenience, flexibility and performance for low, medium or high power He-Ne lasers and amplifiers. This isolator can be rotated within the post mount collar to match the incident plane of polarization. All units are scribed with a polarization orientation mark on the input and output polarizer housings. Polarizer options include Polarcor polarizers for low power, Glan Taylor polarizers for medium power, and Glan Taylor polarizers with escape ports for high power.

## FEATURES

- Compact Size
- High Isolation
- Low Insertion Loss
- Includes Mounting Collar

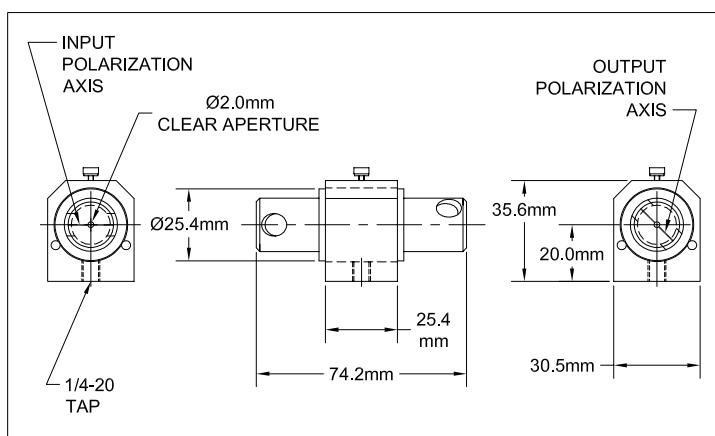
## APPLICATIONS

- Optical Test Measurement
- Optical Amplifier Modules
- Optical Instrumentation

64 Harding Avenue  
Dover, NJ 07801  
t 973.328.7000  
f 973.328.7036  
info@isowave.com  
www.isowave.com

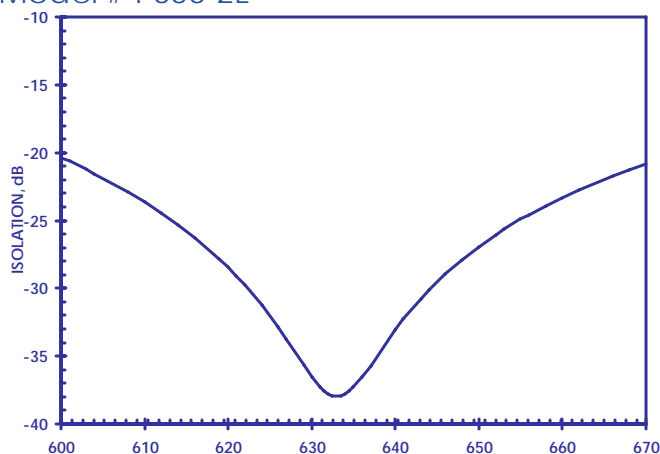
## OUTLINE DRAWING

Model# I-633-2H



## THEORETICAL ISOLATION CURVE

Model # I-633-2L



ISOWAVE



## SPECIFICATIONS

	I-633-2L	I-633-2M & H
Wavelength	633nm	
Peak Isolation (typical)	≥40dB	≥40dB
Isolation (minimum)	35dB	38dB
Insertion Loss (typical)	≤1.6dB	≤0.4dB
Insertion Loss (maximum)	1.8dB	0.7dB
Diameter (nominal)	25.4mm	
Length (nominal)	61mm	59mm & 75mm
Clear Aperture	2mm	
Storage Temperature	0 to + 70°C	
Polarization of Input	Indicated	
Polarization of Output	45° (nominal) to input	

For custom configurations or specifications, please contact an ISOWAVE sales engineer.

## ORDERING INFORMATION

I — 6 3 3 — 2

- L=Low Power
- M=Medium Power
- H=High Power

64 Harding Avenue  
 Dover, NJ 07801  
 t 973.328.7000  
 f 973.328.7036  
 info@isowave.com

[WWW.ISOWAVE.COM](http://WWW.ISOWAVE.COM)